

Tous droits strictement reserves. Reproduction ou communication a des tiers interdite sous quelque forme que ce soit sans autorisation ecrite du proprietaire. Propriete de c FCI. Droits de reproduction FCI.

All rights strictly reserved. Reproduction or issue to third parties in any form whatever is not permitted without written authority from the proprietor. Property of FCI. Copyright FCI.

FCI

mat'l. code				tolerances unless otherwise specified				CUSTOMER COPY		 www.fciconnect.com	
ltr	ecn no	dr	date	linear	.X $\pm$ .3			projection	title		
C	V60981	LSS	7/24/96		.XX $\pm$ .13				R/A GANG JACK FILTER ASSY		
D	V61300	EPK	9/23/96		.XXX $\pm$ .051				8 POS SHIELDED SNAP PEG		
E	V61440	MDF	10/17/96	angles	0° $\pm$ 2'			 MM	product family MOD JACK		code
F	V91501	CGC	8/9/99	dr	L.POTTIEGER	3/15/95	size		213		
G	V03-1103	PJ	10/23/03	enrg	Y.BELOPOLSKY	3/15/95	dwg no		sheet		
H	M04-0189	MHT	10/11/04	chr	Y.BELOPOLSKY	3/15/95	scale		1 of 7		
J	M05-0074	MHT	4/23/05	appd	Y.BELOPOLSKY	3/15/95	1:1		A		
sheet	revision	J	H	G	J	G	G	H			
index	sheet	1	2	3	4	5	6	7			

PRODUCT No.	NOTE 8	PORTS No	DIM A $\begin{matrix} +0.60 \\ -0.00 \end{matrix}$	DIM B	DIM C $\pm 0.10$	DIM D $\pm 0.15$	GROUND LEG NUMBER ON THE BACK (VIEW B) SEE DIAGRAM ON SHT. 3
95672-X01		1	15.74	-	5.715	11.43	
95672-X01A		1	15.74	-	5.715	11.43	
95672-X02 -YZ		2	30.98	13.97	12.700	25.40	
95672-X03 -YZ		3	44.95	27.94	19.685	39.37	
95672-X04 -YZ		4	58.92	41.91	26.670	53.34	
95672-X05 -YZ		5	72.89	55.88	33.655	67.31	
95672-X06 -YZ		6	86.86	69.85	40.640	81.28	
95672-X07 -YZ		7	100.83	83.82	47.625	95.25	
95672-X08 -YZ		8	114.80	97.79	54.610	109.22	
95672-X09 -YZ		9	128.77	111.76	61.595	123.19	
95672-X10 -YZ		10	142.74	125.73	68.580	137.16	
95672-X11 -YZ		11	156.71	139.70	75.565	151.13	
95672-X12 -YZ		12	170.68	153.67	82.550	165.10	

NOTE 5  
NOTE 5

NOTES:


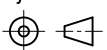
- RECOMMENDED P.C.B THICKNESS 1.60 MM
- HOUSING MAT'L: HIGH TEMP RESIN
- CONTACTS: PHOS BRONZE ALLOY UNS-C51000,  $\phi$  0.460 ROUND WIRE, PLATING SEE TABLE.
- SHIELDING MATERIAL: BRASS ALLOY .25 MM THICK  
SHIELDING PLATING: NICKEL UNDERPLATE 40u" MIN  
FINISH OF BRIGHT TIN LEAD 100u" MIN  
LEAD FREE OPTION  
SHIELDING PLATING: NICKEL UNDERPLATE 40u" MIN  
FINISH OF BRIGHT PURE TIN 100u" MIN
- SEE SNGL. PORT GROUND LEG OPTIONS, SIDE VIEW PG.1 FOR DETAILS.
- ALL DIMENSIONS IN MILLIMETERS.
- COMPANY LOGO LOCATED IN THIS AREA.
- ADD LF SUFFIX AT THE END OF PART NUMBER FOR LEAD FREE OPTION.
- THE HOUSING WILL WITHSTAND EXPOSURE TO 260°C PEAK TEMPERATURE FOR 15 SECONDS IN A WAVE SOLDER APPLICATION WITH A 1.5mm MINIMUM THICK CIRCUIT BOARD. SEE APPLICATION NOTES/PROCEDURES IF THEY ARE AVAILABLE.
- THIS PRODUCT MEETS EUROPEAN UNION DIRECTIVES AND OTHER COUNTRY REGULATION AS DESCRIBED IN GS-22-008.
- PLATING OPTIONS:  
MAY BE EITHER GOLD OR GXT PLATED AT MANUFACTURER'S OPTION.

PLATING CODE X	PLATING ⑪
0	30u" G.X.T.
1	15u" GOLD.
3	30u" GOLD.
5	50u" GOLD.

FRONT SHIELD CODE Y
0 = STANDARD GRND. TABS
1 = NO GRND. TABS

REAR SHIELD CODE Z
0 = STANDARD GRND. LEGS
1 = 1 STANDARD GRND. LEG
2 = ALL GRND. LEGS
3 = NO GRND. LEGS

NOTE: PLEASE CHECK FOR AVAILABILITY, NOT ALL OPTIONS AVAILABLE.

mat'l. code				tolerances unless otherwise specified				CUSTOMER COPY		 www.fciconnect.com	
ltr	ecn no	dr	date	linear	.X $\pm$ .3			projection	title		
H					.XX $\pm$ .13				R/A GANG JACK FILTER ASSY		
					.XXX $\pm$ .051				8 POS SHIELDED SNAP PEG		
				angles	0° $\pm$ 2'			 MM	product family MOD JACK		code
				dr	L.POTTIEGER	3/15/95	size		213		
				enr	Y.BELOPOLSKY	3/15/95	dwg no		sheet		
				chr	Y.BELOPOLSKY	3/15/95	scale		2 of 7		
				appd	Y.BELOPOLSKY	3/15/95	1:1		A 95672		
sheet index	revision sheet										

Tous droits strictement reserves. Reproduction ou communication a des tiers interdite sous quelque forme que ce soit sans autorisation ecrite du proprietaire. Propriete de c FCI. Droits de reproduction FCI.

All rights strictly reserved. Reproduction or issue to third parties in any form whatever is not permitted without written authority from the proprietor. Property of FCI. Copyright FCI.

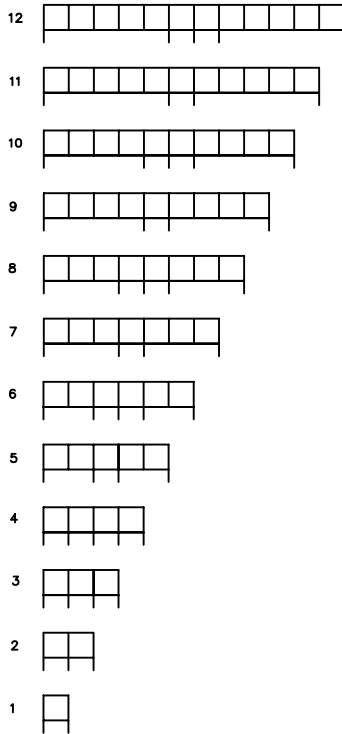
REAR SHIELD (VIEWED FROM PLUG ENTRY SIDE)  
GROUND SOLDERTAIL CONFIGURATION

CODE "Z" = 0

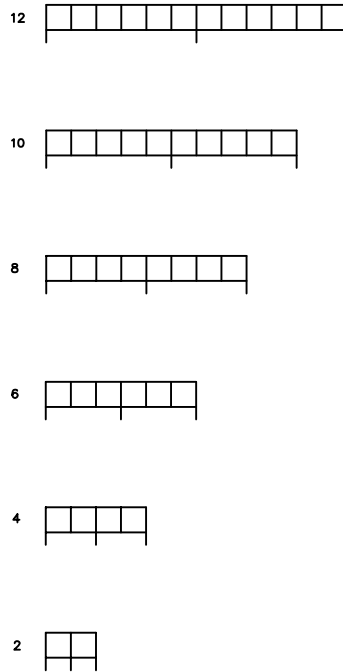
CODE "Z" = 1

CODE "Z" = 2

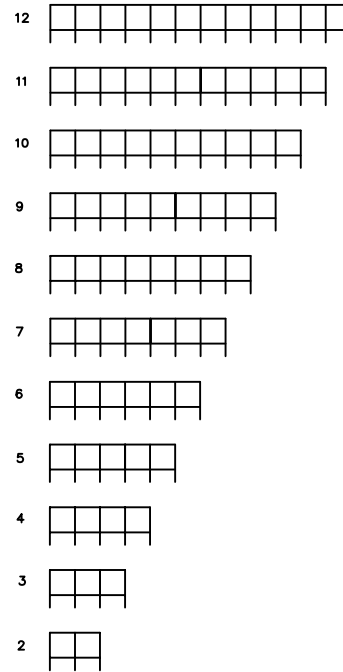
CODE "Z" = 3



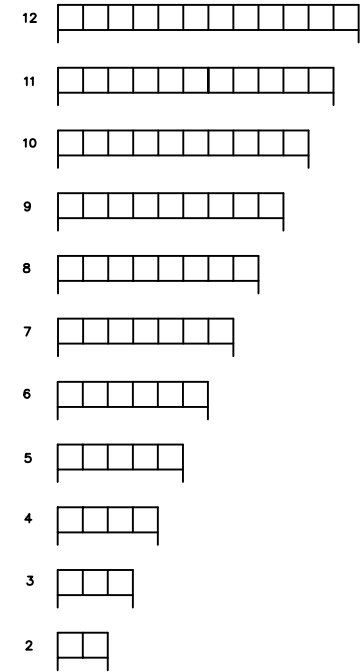
PCB LAYOUT SHEET 4



PCB LAYOUT SHEET 5



PCB LAYOUT SHEET 6



PCB LAYOUT SHEET 7

Tous droits strictement reserves. Reproduction ou communication a des tiers interdite sous quelque forme que ce soit sans autorisation ecrite du proprietaire. Propriete de c FCI. Droits de reproduction FCI.



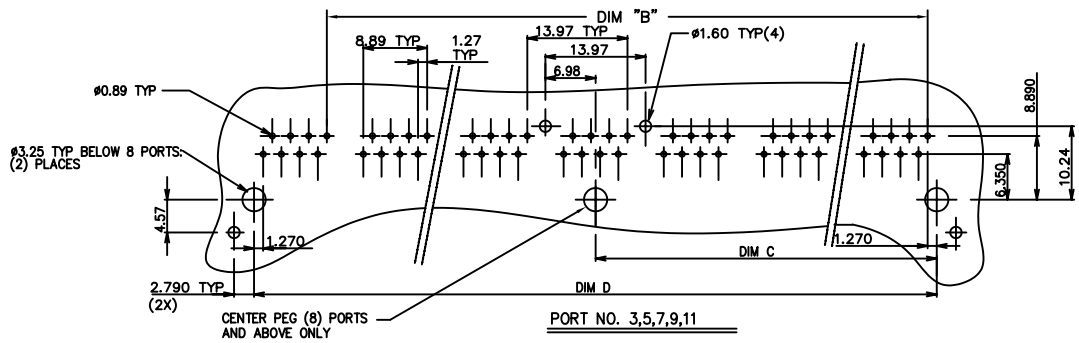
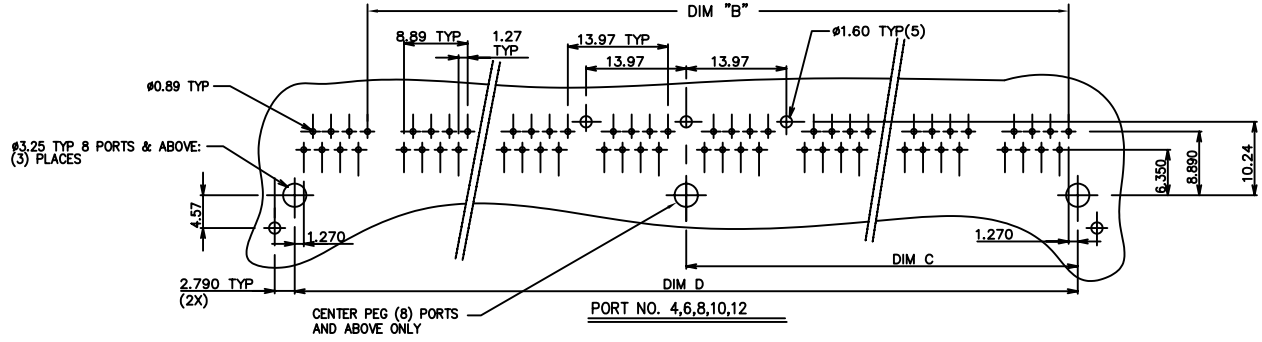
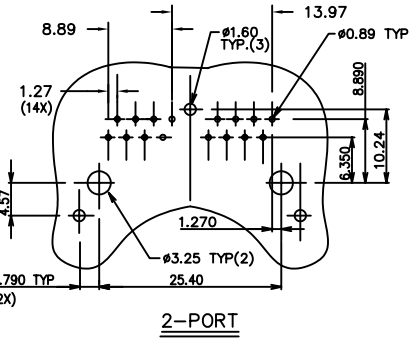
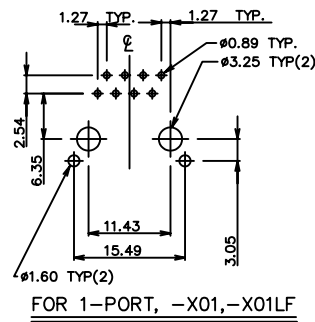
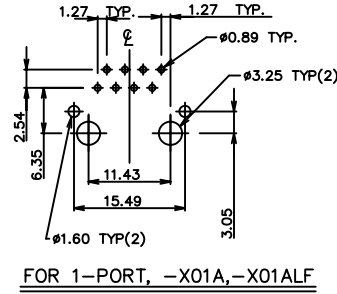
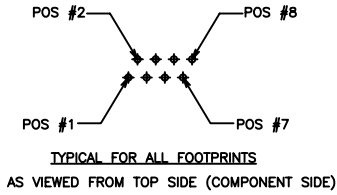
All rights strictly reserved. Reproduction or issue to third parties in any form whatever is not permitted without written authority from the proprietor. Property of FCI. Copyright FCI.

mat'l. code				tolerances unless otherwise specified			CUSTOMER COPY		 www.fciconnect.com	
ltr	ecn no	dr	date	linear	.X±.3		projection	title R/A GANG JACK FILTER ASSY 8 POS SHIELDED SNAP PEG		
G					.XXX±.051					
				angles	0° ±2°		 MM	product family MOD JACK		code
				dr	G.CLEMENS	6/30/99		scale	size	
				enr	B.BRUBAKER	6/30/99	1:4		A	
				chr	B.BRUBAKER	6/30/99		95672		3 of 7
				appd	B.BRUBAKER	6/30/99				
sheet index	revision sheet									

Tous droits strictement réservés. Reproduction ou communication à des tiers interdite sous quelque forme que ce soit sans autorisation écrite du propriétaire. Propriété de c FCI. Droits de reproduction FCI.

All rights strictly reserved. Reproduction or issue to third parties in any form whatever is not permitted without written authority from the proprietor. Property of FCI. Copyright FCI.

**FCI**

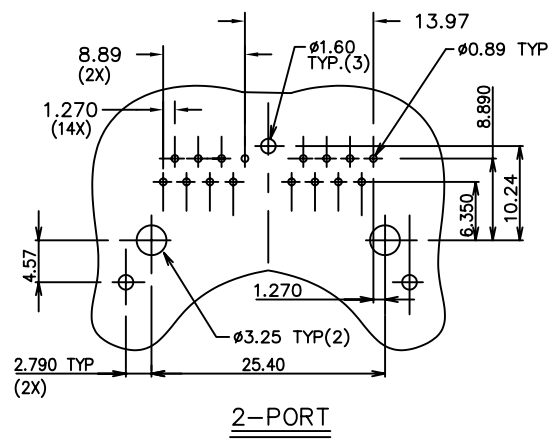
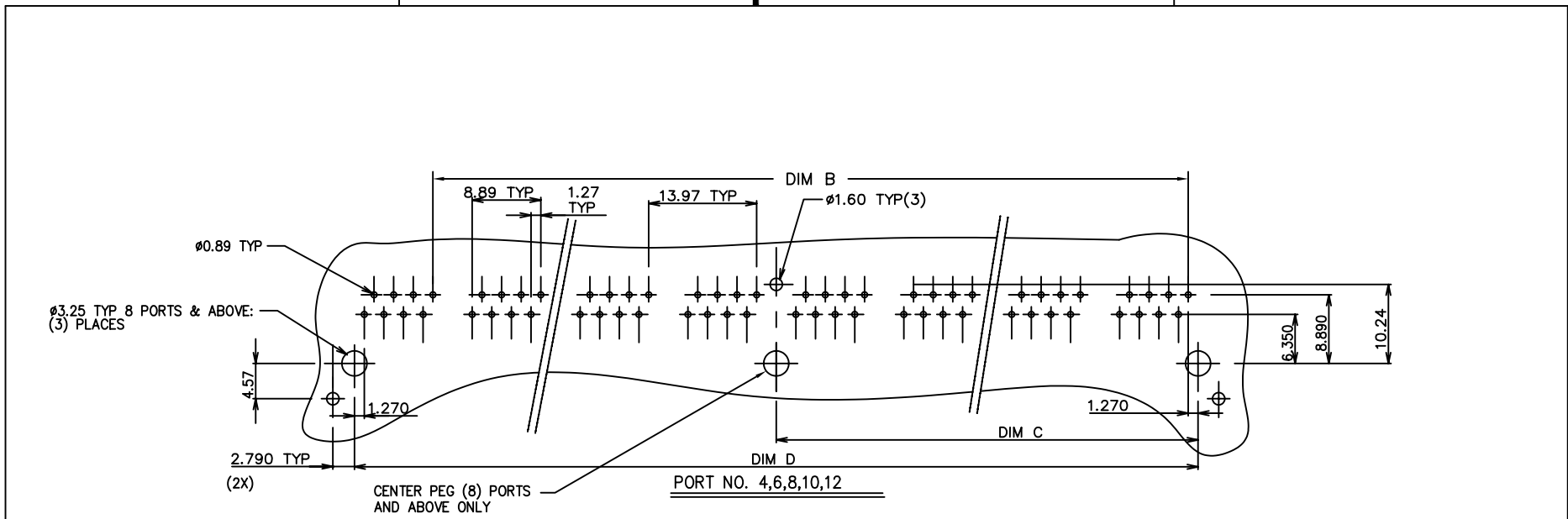


RECOMMENDED P.C.B LAYOUT  
CODE "Z" =  $\emptyset$  (STANDARD GROUND LEGS)

mat'l. code				tolerances unless otherwise specified		CUSTOMER COPY		 www.fciconnect.com	
ltr	ecn no	dr	date	linear	.x $\pm$ .3	projection	title		
J				angles	.xx $\pm$ .13	 MM	R/A GANG JACK FILTER ASSY		
				dr	.xxx $\pm$ .051		8 POS SHIELDED SNAP PEG		
				enr	0' $\pm$ 2'	scale	product family MOD JACK		code
				chr	L.POTTIEGER 3/15/95		size dwg no		213
				appd	Y.BELOPOLSKY 3/15/95		A 95672		sheet 4 of 7
sheet index		revision sheet							

Tous droits strictement reserves. Reproduction ou communication a des tiers interdite sous quelque forme que ce soit sans autorisation écrite du propriétaire. Propriete de c FCI. Droits de reproduction FCI.

All rights strictly reserved. Reproduction or issue to third parties in any form whatever is not permitted without written authority from the proprietor. Property of FCI. Copyright FCI.



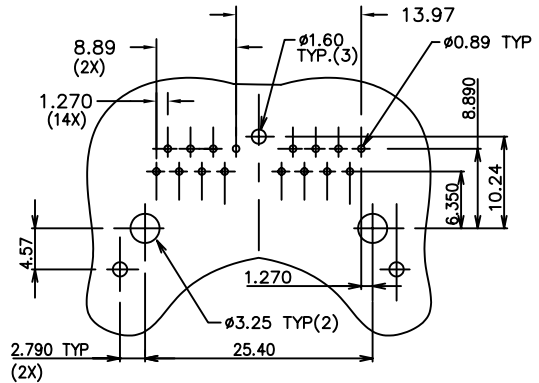
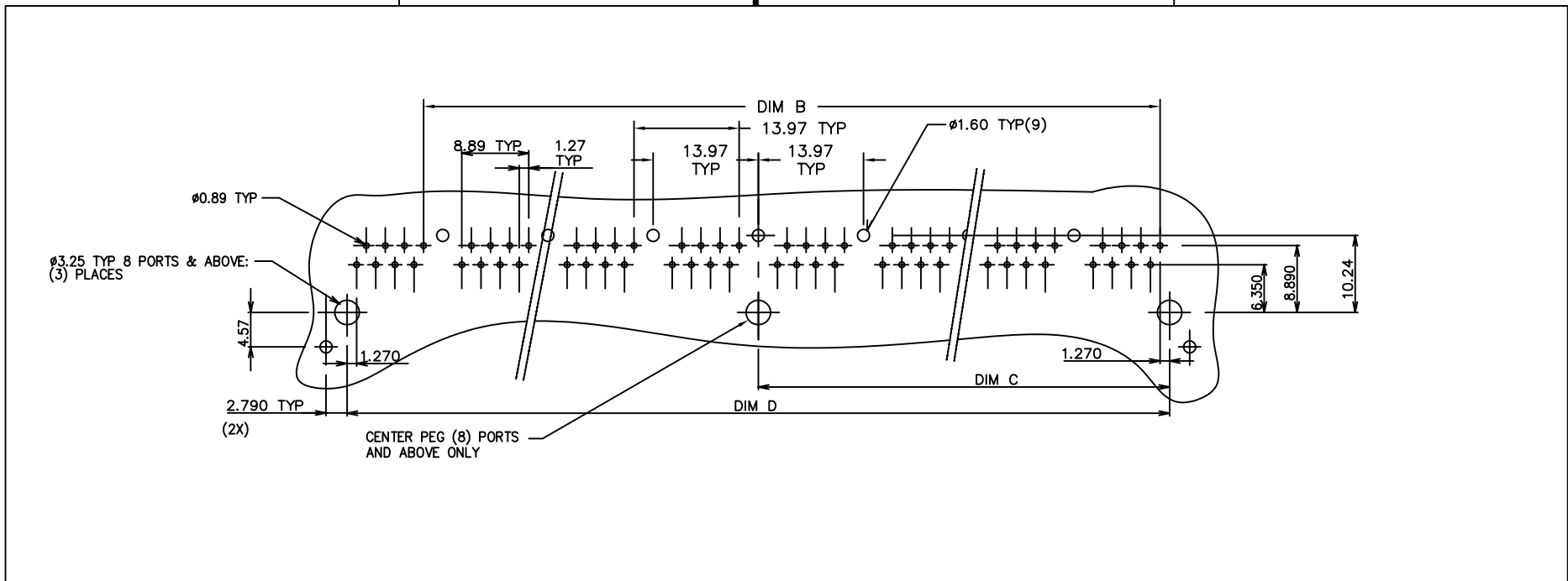
RECOMMENDED P.C.B LAYOUT

CODE "Z" = 1 (1 GROUND LEG)

mat'l. code				tolerances unless otherwise specified			CUSTOMER COPY		 www.fciconnect.com	
ltr	ecn no	dr	date	linear	.XX±.13		projection	title		
G					.XXX±.051			 MM	R/A CAT 5 GANG JACK ASSY	
				angles	0° ±2'		 1:1		8 POS SHIELDED SNAP PEG	
				dr	G.CLEMENS	6/30/99		product family MOD JACK		code
				enr	B.BRUBAKER	6/30/99		size dwg no		213
				chr	B.BRUBAKER	6/30/99		A 95672		sheet 5 of 7
				appd	B.BRUBAKER	6/30/99				
sheet index	revision sheet									

Tous droits strictement reserves. Reproduction ou communication a des tiers interdite sous quelque forme que ce soit sans autorisation ecrite du proprietaire. Propriete de c FCI. Droits de reproduction FCI.

All rights strictly reserved. Reproduction or issue to third parties in any form whatever is not permitted without written authority from the proprietor. Property of FCI. Copyright FCI.



2-PORT

(SAME AS STANDARD CODE "Z"=0)

RECOMMENDED P.C.B LAYOUT

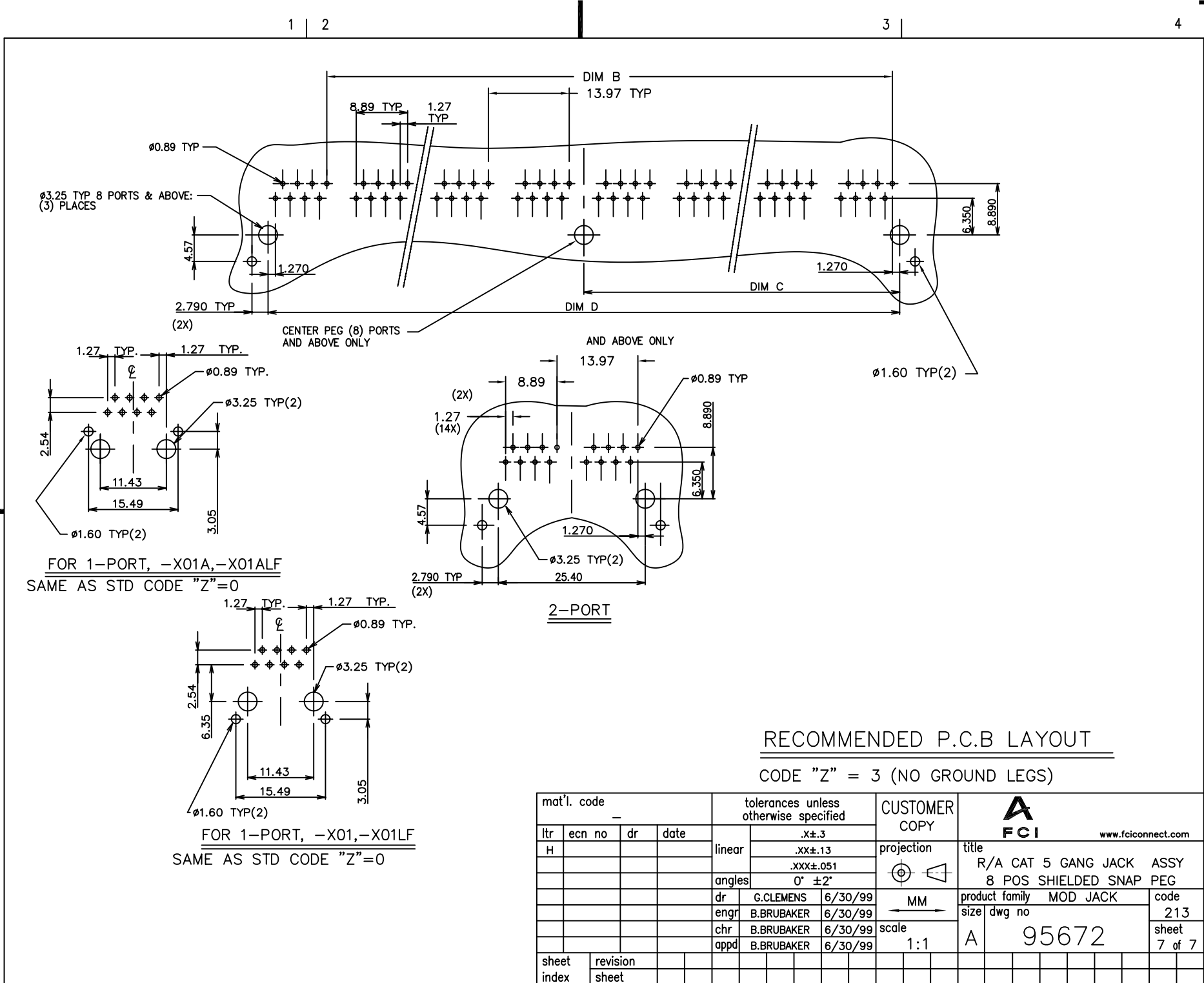
CODE "Z" = 2 (ALL GROUND LEGS)

mat'l. code				tolerances unless otherwise specified			CUSTOMER COPY		 www.fciconnect.com	
ltr	ecn no	dr	date	linear	.X±.3		projection	title		
G					.XX±.13			 MM	R/A CAT 5 GANG JACK ASSY	
				angles	.XXX±.051		8 POS SHIELDED SNAP PEG			
				dr	G.CLEMENS	6/30/99	product family MOD JACK		code	
				enr	B.BRUBAKER	6/30/99	size		213	
				chr	B.BRUBAKER	6/30/99	A		sheet	
				appd	B.BRUBAKER	6/30/99	scale		6 of 7	
sheet index		revision sheet				scale 1:1		cage code 95672		

Tous droits strictement reserves. Reproduction ou communication a des tiers interdite sous quelque forme que ce soit sans autorisation ecrite du propriétaire. Propriete de c FCI. Droits de reproduction FCI.

All rights strictly reserved. Reproduction or issue to third parties in any form whatever is not permitted without written authority from the proprietor. Property of FCI. Copyright FCI.

**FCI**



FOR 1-PORT, -X01A, -X01ALF  
SAME AS STD CODE "Z"=0

2-PORT

FOR 1-PORT, -X01, -X01LF  
SAME AS STD CODE "Z"=0

RECOMMENDED P.C.B LAYOUT

CODE "Z" = 3 (NO GROUND LEGS)

mat'l. code				tolerances unless otherwise specified			CUSTOMER COPY		 www.fciconnect.com	
ltr	ecn no	dr	date	linear	.X±.3		projection	title		
H					.XXX±.051			 MM	R/A CAT 5 GANG JACK ASSY	
				angles	0° ±2'		 1:1		8 POS SHIELDED SNAP PEG	
				dr	G.CLEMENS	6/30/99		product family	MOD JACK	code
				enrg	B.BRUBAKER	6/30/99		size	dwg no	213
				chr	B.BRUBAKER	6/30/99		A	95672	sheet 7 of 7
				appd	B.BRUBAKER	6/30/99				
sheet index	revision sheet									